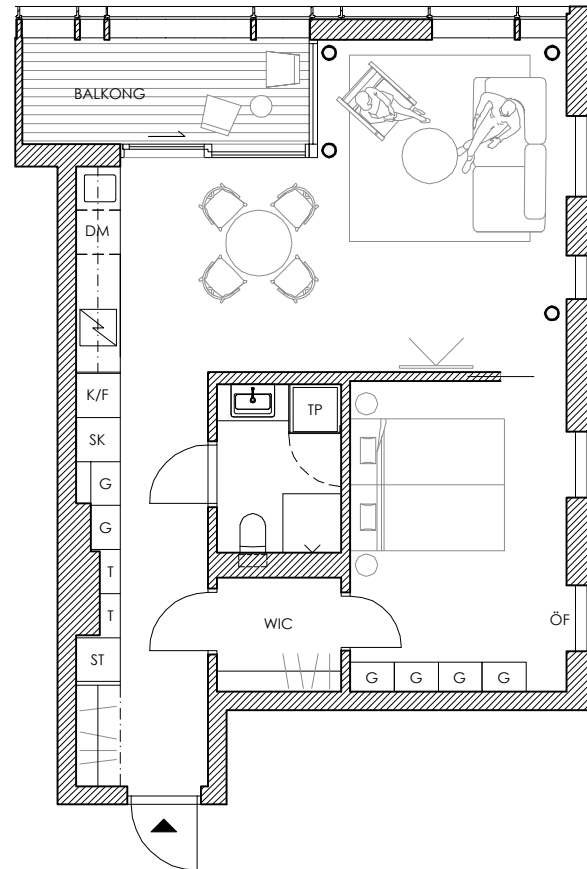
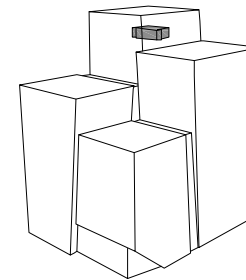




17:5 North East



LGH: 17:5
2 ROK

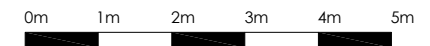
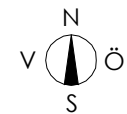
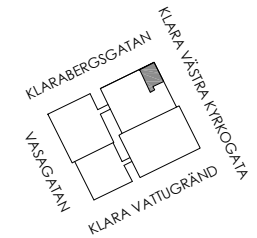
BOA: 56 KVM
BALKONG: 6 KVM

PLAN: 17

TECKENFÖRKLARING

	SPISHÄLL	DM - DISKMASKIN
	G - GARDEROB	K/F - KYL/FRYS
	SK - SKAFFERI	ST - STÄDFÖRVARING
	T - TEKNIK	TP - TVÄTTPELARE
	WIC - WALK-IN CLOSET	ÖF - ÖPPNINGSBART FÖNSTER

BALKONG MED SKJUTBARA GLASPARTIER
GENERELL RUMSHÖJD: 2640 MM
RUMSHÖJD I HALL, WIC, BADRUM: 2400 MM
(VID KYLA SJUNKER RUMSHÖJDEN LOKALT TILL 2350 MM)



CONTINENTAL apts.